



St. Pauls Street Stamford, PE9 2BE

Entering the apartment from the communal landing area you walk into your own entrance hall before stepping into the good sized living room with kitchen off. Moving further through the accommodation there is a generous sized double bedroom with large box bay window. Completing the accommodation is a bathroom which includes a bath, with shower over, wash hand basin, and toilet.

Agents Note:
Local Authority – South Kesteven District Council
Council Tax Band – A
EPC Rating - D

£180,000

St. Pauls Street

Stamford, PE9 2BE



- Town Centre One Bedroom Flat
- Good Sized Living Room
- Please refer to attached Key Facts for Buyers for Material Information Disclosures
- Well Presented Throughout
- Gas Central Heating
- IDEAL FTB/INVESTMENT
- Upgraded Kitchen
- Generous Bedroom

Communal Hall

Entrance Hall

10'4" x 3'2" (3.15m x 0.97m)

Living Room

9'8" x 16'10" (2.95m x 5.13m)

Kitchen

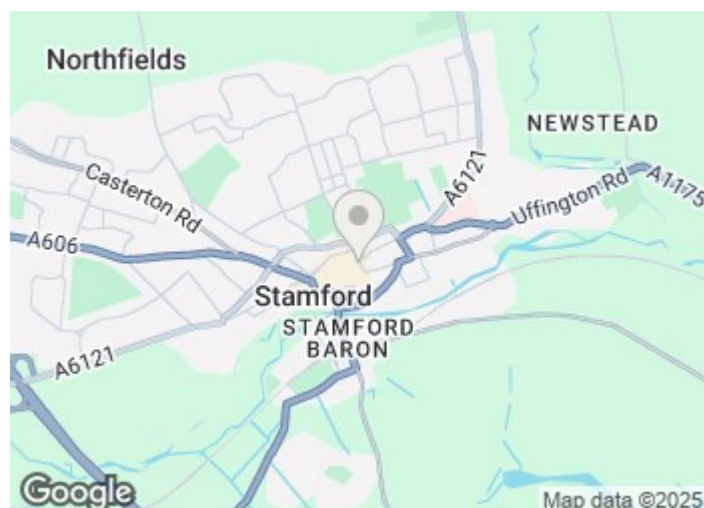
6'1" x 11'0" (1.85m x 3.35m)

Bedroom

9'3" x 17'3" max (2.82m x 5.26m max)

Bathroom

5'10" x 5'7" (1.78m x 1.70m)

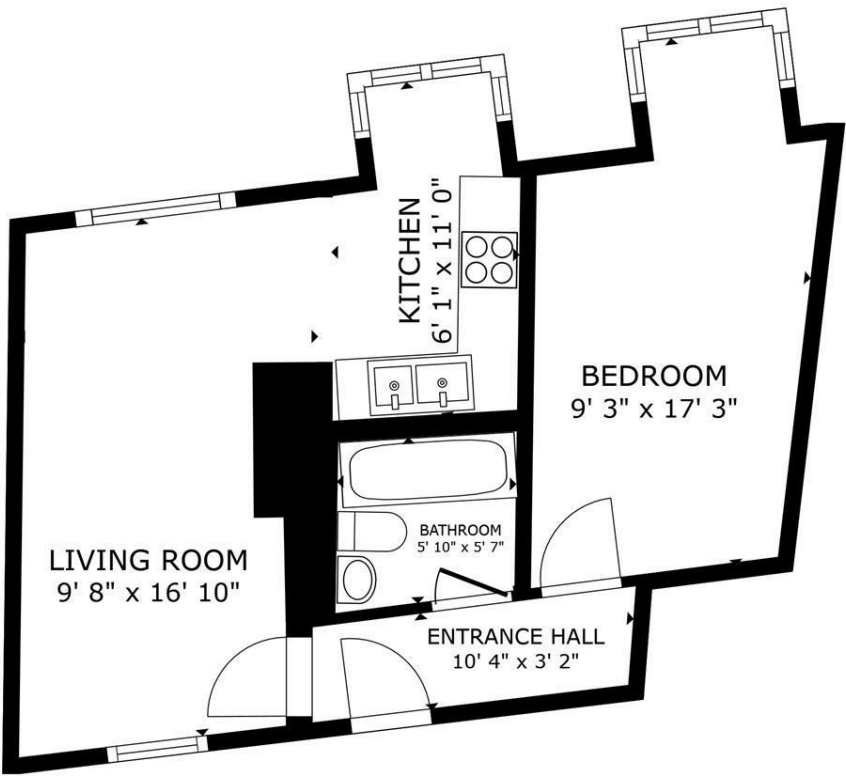


Directions

Please use the following postcode for Sat Nav guidance - PE9 2BE



Floor Plan



FLOOR PLAN

GROSS INTERNAL AREA
FLOOR PLAN 439 sq.ft.
TOTAL : 439 sq.ft.

SIZES AND DIMENSIONS ARE APPROXIMATE, ACTUAL MAY VARY.

These particulars, whilst believed to be accurate are set out as a general outline only for guidance and do not constitute any part of an offer or contract. Intending purchasers should not rely on them as statements of representation of fact, but must satisfy themselves by inspection or otherwise as to their accuracy. No person in this firms employment has the authority to make or give any representation or warranty in respect of the property.

2-3 St Johns Street, Stamford, Lincs, PE9 2DA
Tel: 01780 750000 Email: info@goodwinproperty.co.uk goodwinproperty.co.uk

